

# Dzus Bracket

## Install Tips

### Step 1:

Make sure the Dzus Brackets that you are installing our U-Shaped Bracket on have a center hole large enough for the latch base to easily pass through.

We suggest a step bit to open this hole up to between 3/4"-7/8" hole.



### Step 3:

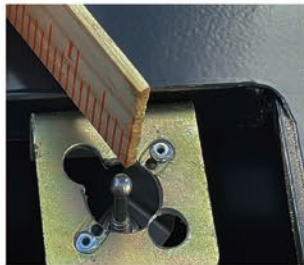
All our U-Shaped Brackets have an Aluminum Swivel Bushing in the center hole. This Bushing allows the stud to pivot apx 1/8". This helps with Alignment, when installing Multiple Latches in the same panel.



### Step 5:

(Adjusting the stud heights). Start with a straight edge on the fender. **You will adjust the stud height 1/8" (.125)**

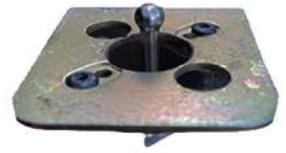
**Below the flat edge of the fender.** This height will be very close to your finished height. This step requires Patience. The more time you take doing this step will pay off, once installed. Start with the 4 corners. Don't Pop rivet the latches until you have the stud height adjusted.



### Step 2:

Mount our U-Shaped Bracket under the Dzus Bracket with 1/8" Pop rivets.

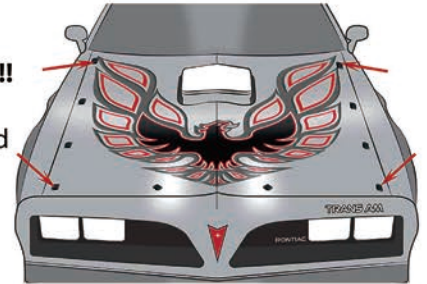
**DON'T MOUNT THE SPRINGS UNTIL THE VERY END**



### Step 4:

**!!! IMPORTANT STEP!!!**

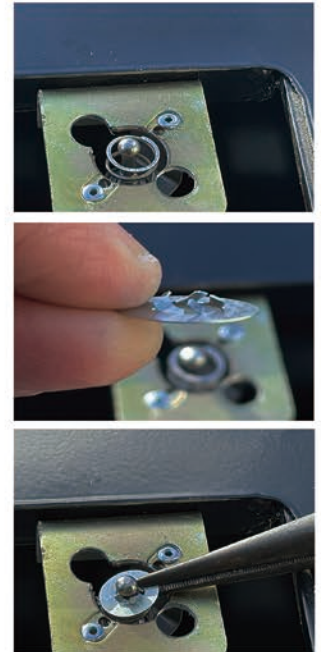
Remove the 4 corner Swivel Bushing to hold your panel firm.



### Step 6

**Last Step When you have adjusted all the latch Heights. Install Springs and Retainers Once the spring retainers go on, Its more difficult to Adjust the stud height. You can test fit everything with just the spring. But, if you put the spring retainer on before you test fit everything Its more difficult to get off.**

Install springs and Spring retainers. Spring retainers Spring retainers tabs will face up when Installed. Push Spring retainer over the ball stud. Once pushed on, take needle nose pliers and flatten the tabs down to hold into place



**Any tips or suggestions you might find helpful please let us know. We would love to hear from you. Please drop us an email with Pictures, if you can to [pushbuttonlatches@gmail.com](mailto:pushbuttonlatches@gmail.com)**

**Note: We supply 2 Height Springs  
If your Stud is Adjusted toward the top  
of your Stud Use the Short Spring  
to Avoid Spring Binding.**



**Latch Install Video**

